

MOBILITY JOURNEY



Dedicated to ensuring your employees' relocation experience is smooth, efficient, and tailored to their needs.

From the decision-making phase to the end of assignments, we're here every step of the way to provide exceptional service.

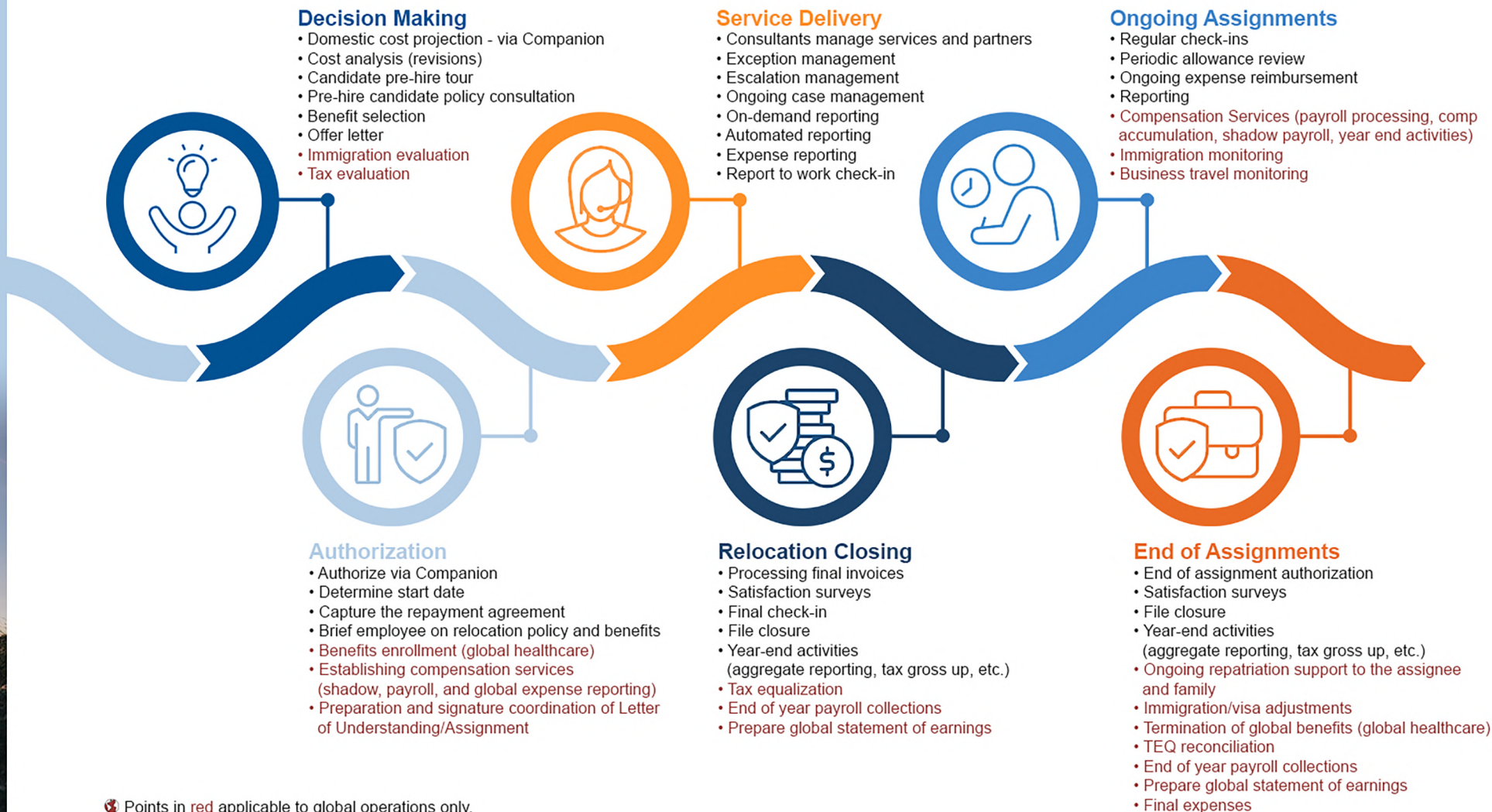


STREAMLINED EXPENSES

With a wide global reach, our Expense Management Specialists audit and process relocation expenses. With a focus on transparent financial clarity, our online expense submissions via Companion allow you and your employees to track the status of relocation expenses.

MAINTAIN DATA INTEGRITY

Harnessing the power of data analytics, we meticulously track each step of the journey. This allows us to refine processes, anticipate needs, and deliver proactive solutions for a truly personalized experience. Additionally, it allows us to track and report on client/location trends, ensuring data integrity and informed decision-making.



Points in red applicable to global operations only.